



Planet Aid®
2014 ANNUAL
REPORT

For the Environment, For People

Message from the President

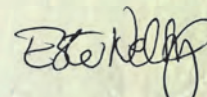
Temperature data from the Japan Meteorological Association (JMA) revealed that 2014 was the hottest year since 1880, when climate recordkeeping began. Moreover, major floods, record droughts, severe storms, and melting polar ice remind us that the climate situation is becoming increasingly dire, especially for the poor who live in vulnerable locations. Climate change is at the forefront of national and international dialogue, and ideas for curbing emissions are continually discussed. But discussion is not enough; there must be action.

Textiles and textile waste remain the “elephant in the room” in discussions about climate change, despite their large contribution to the problem. Textiles have an immense carbon footprint because of the size and scope of the industry, the intensive use of energy in production and manufacturing, and the harmful gases released from decomposition after disposal. With those kinds of consequences for our environment, it is shocking that the United States generates approximately 12 million tons of textile waste each year and that 85% of that waste is not recovered.

Planet Aid has been working hard to increase textile recycling by placing its drop-off bins at convenient locations that help to make recycling easier. In 2014 we collected and recycled 100 million pounds of textiles. Though this is a sizable amount, we must redouble our efforts, as there are still too many textiles needlessly going to waste and contributing to climate change. In the next year, we plan to increase the number of bins available to the public and expand our educational outreach through school presentations, online campaigns, and local events.

Of course, textile recycling is only part of what we do. As you will read on the pages of this report, Planet Aid also supports development projects in 12 countries. Extreme weather events destroy the homes, farms, and communities of the poor in these countries. The net proceeds from our recycling operation support projects that increase resilience in the face of climate change, strengthening education, improving health, expanding sustainable agriculture, and spurring community development. In 2014 alone, we helped reach over 2 million people and directly impacted many thousands more. The beneficiaries of our work are better able to grow enough food to eat, avoid getting sick, access clean water, earn more income, and create a brighter future for themselves and their children.

Thanks to everyone who has supported our efforts and made our achievements possible. To our employees, local and global partners, site hosts, and donors: know that through your contributions you are making a difference for our environment and for those who reside in it.



Ester Neltrup, *President*



Mission

Planet Aid's mission is to inform, mobilize, and inspire individuals and communities to work together to bring about worldwide environmental and social progress. The projects we support thus aim to protect the environment, reduce waste, and increase the efficient use of vital resources.

We work to strengthen and organize communities, reduce poverty and promote small enterprise development, support sustainable local food production, improve access to training and quality education, and increase health awareness and encourage healthy lifestyles.

We embrace the principles of equality and self-determination in all that we do and foster cooperation and understanding among peoples across the planet. Disadvantaged populations are our priority, and we seek to empower them to create lasting positive change.



For the Environment...



"Planet Aid has been one of Green Schools' very best supporters and partners for a number of years. The organization's commitment to keeping the earth GREEN, and to developing the next generation of environmental leaders through programs like National Green Schools Society, makes a tremendous impact in our schools and communities and we couldn't be more grateful!"

- Robin Organ, Green Schools Executive
Director/Founder

Convenient Bins Make Recycling a Reality

In 2014, Planet Aid collected used clothing, shoes, and other textiles from 20,000 recycling bins across 21 states and saved 100 million pounds from disposal.

Would this clothing have been recycled had a Planet Aid bin not been there to accept it? Based on what the research tells us, the answer is probably not.

A growing body of evidence indicates that convenience is essential to making recycling more of a reality. For example, a 2014 Johnson & Johnson study found that the absence of recycling bins is the biggest barrier to recycling, and a landmark 2006 U.S. Government Accountability Office study identified ease and convenience as key factors that would help municipalities boost lagging recycling rates.

Planet Aid's bins make it easy to drop off a bundle of clothes in your own neighborhood, whether it be at a school, the local gas station, or the shopping mall. With each additional bin that we place, Planet Aid makes textile recycling that much more convenient, but we recognize that we still have so much more to do.


The U.S. Environmental Protection Agency reports that every year 12 million tons of textiles are thrown in the trash rather than recycled (only 15% of all unwanted textiles are currently recycled each year). How much is 12 million tons? It is equivalent to the weight of over 1 million school buses! Those textiles, whether in good shape or not, are a resource that we simply cannot afford to waste in this age of climate change.

It is imperative that we reuse and recycle all textiles (the EPA estimates that the 2 million tons of textiles recycled in 2012 had a greenhouse gas savings equivalent to removing 1.2 million cars off the highway). Used textiles can either be worn again or, if damaged, can be repurposed into a wide variety of products, from home insulation to the yarn windings in baseballs and much more.

**By recycling
100 million
pounds of
textiles, Planet
Aid saved the
same quantity
of greenhouse
gases as taking
80,000 cars
off the
highway.**



For People...

A group of approximately 12 African children and one woman are gathered outdoors. The woman, with long braids, is in the center, smiling. The children are of various ages, some sitting on the ground, others standing. They are wearing colorful clothing. In the background, there is a thatched hut and some greenery. The overall scene is bright and sunny.

"While I was with the U.S. Department of Agriculture's Foreign Agricultural Service, Planet Aid helped to inspire progress and mobilize entire communities to make the kind of transformations needed to end poverty. The organization helped feed hungry children, train teachers, build colleges, and mobilize small farmers to practice sustainable methods. Planet Aid's work was especially successful in places like Malawi and Mozambique, where poverty is deeply entrenched. Their work is vitally important and deeply appreciated."

*-Patricia Sheikh
Former U.S. Department of Agriculture Deputy Administrator
Foreign Agricultural Service
Office of Capacity Building & Development*

A photograph of a rural village with thatched-roof huts and children in the foreground. The scene is set in a dry, sandy environment. In the foreground, several children are visible; one girl in a pink top and colorful patterned shawl is looking towards the camera. Behind her, another child is partially visible. To the left, a boy in a light-colored shirt is looking towards the camera. The background shows traditional huts with thatched roofs and a dirt path. A large blue curved banner is overlaid on the right side of the image, containing text.

Health

Sustainable
Agriculture

Education

Community
Development

In 2014, the projects Planet Aid supported impacted the lives of more than 2,000,000 beneficiaries and helped lift up many more. These initiatives (led by registered in-country local organizations) have made progress in four basic sectors: education, sustainable agriculture, health, and community development. Each project model takes a comprehensive approach, utilizing multi-sector strategies that mobilize beneficiaries and create the energy and momentum needed for lasting long-term development.



Health

HIV/AIDS, tuberculosis, and malaria are epidemic in Africa and Asia. Planet Aid is helping communities fight these diseases through the Total Control of the Epidemic (TCE) and the HOPE programs. In 2014, Planet Aid's support for these projects helped reach nearly 1.4 million people with prevention information, counseling, referrals, or testing.



TCE is a comprehensive behavior change project conducted door-to-door by dedicated in-country staff and volunteers. These individuals work diligently to increase awareness, decrease stigma and discrimination, and provide support for children and adults affected by the epidemics. TCE has helped increase the number of people tested for HIV, helped pregnant women obtain services to prevent transmission of HIV to their babies, and ensured those testing positive for HIV obtained care. Planet Aid supported the implementation of TCE in India, Malawi, and South Africa.

Planet Aid supported the operation of HOPE centers in Botswana, South Africa, and Zimbabwe. A HOPE center serves as a resource hub and activity center for people who have tested HIV positive, people who do not know their HIV status and need information and reassurance about testing, people who need information about sexually transmitted diseases, and people who want to participate in caring for those infected with or affected by HIV/AIDS. Through its outreach program, HOPE promotes prevention measures at schools, youth clubs, and throughout the community. For those already infected, HOPE provides support in boosting nutrition, maintaining treatment, and living a healthy life.





Sustainable Agriculture

Utilizing the Farmers' Clubs development model, Planet Aid is helping smallholder producers in sub-Saharan Africa increase crop yields and income while strengthening community food security. The farmers are organized into cooperative groups and mobilized to adopt sustainable conservation farming techniques to increase production and income, gain access to markets, and improve their overall quality of life. Together, farmers can also purchase in bulk, better leverage fair prices, share transportation costs, and access markets. Planet Aid supported more than 34,000 smallholder farmers in 2014 in Brazil, the DR Congo, Ecuador, Guinea-Bissau, India, South Africa, and Zimbabwe.

Members of a newly formed Farmers' Club in Ecuador harvest their crops.





Education

Planet Aid supported approximately 3,700 student teachers at 7 teacher-training colleges in the DR Congo, Guinea-Bissau, India, Mozambique, and Malawi. In cooperation with each country's ministry of education, graduates of these colleges are hired to teach in elementary schools in rural areas where teacher shortages are especially critical and resources are few. The colleges also reach out to their local communities to improve living conditions and offer educational opportunities (such as reading classes to build literacy) for adults as well as youth. Students at the colleges thus learn about the needs of the communities in which they teach, and how they themselves can become agents of change, helping to mobilize action and spur development.

Early childhood education is also among our priorities, and we supported 1,200 preschool students in South Africa. In Mozambique we are helping to establish 70 new preschools in the Maputo Province.





Planet Aid supported nearly 500 vocational students at schools in Guinea-Bissau, Mozambique, and Zimbabwe. The students learned marketable trade skills, such as motor mechanics, construction, and solar energy technology. They also equipped graduates with the essential life skills that inspire resilience and perseverance in places where everyday existence is often very difficult. The schools target youth who have dropped out of school, orphans, and former child soldiers, giving them a second chance at life.



Community Development

Community development may include drilling new wells and building latrines, but it can also include mobilizing communities to stop the spread of an epidemic, improving school facilities, and even incubating small businesses to help families earn more income. In 2014, Planet Aid supported community development through the Child Aid development model in Belize, Ecuador, Laos, Malawi, the DR Congo, South Africa, and Zimbabwe.

More than 450,000 individuals benefited from the Child Aid projects supported by Planet Aid. This comprehensive development model empowers participants to become agents of change, while creating safe and supportive living conditions for children and their families. Each Child Aid project develops local capacity by organizing Village Action Groups (VAG) to carry out activities (a VAG is comprised of approximately 35-40 families). In Malawi, for example, the VAGs from two districts succeeded in drilling 35 new well boreholes and refurbished 140 previously nonfunctional wells. This effort made clean, safe water available to nearly 10,000 households.



Planet Aid helped drill 35 new boreholes in Malawi that provide access to water.





Microfinance provides villagers, especially women, with the leverage needed to obtain economic success and find their way out of extreme poverty. Planet Aid supports microfinance projects in rural India, implemented by its sister organization Humana India. The project targets poor women who do not have access to formal banking facilities.

More than 48,000 women have benefited from the project and are engaged in income generating activities — approximately 68% are involved in animal husbandry and 27% have small businesses. The loans that were provided (nearly 82,000 were made in 2014) have helped the women increase their monthly family income from \$30 to \$40.



The Food for Knowledge Project is Planet Aid's comprehensive school lunch program, which incorporates elements of the four sectors we work in to bolster the health and learning potential of more than 65,000 school-aged children in Mozambique. By tackling the widespread barriers to education that are endemic throughout the country, this multi-faceted, 3.5-year initiative is providing school children with a clearer path to a better future. Planet Aid is able to implement Food for Knowledge with funding from the USDA McGovern-Dole International Food for Education and Child Nutrition program. The project is being carried out in partnership with ADPP Mozambique, the World Initiative for Soy in Human Health, and the Government of Mozambique.

Food for Knowledge's holistic approach combines and integrates the following components: daily school lunches, teacher training, nutrition education, school garden establishment, after-school learning clubs, and the building or restoration of school kitchens and latrines. The project reached its midpoint in 2014 with many of the target goals exceeded.



FOOD for 
KNOWLEDGE



RESULTS TO DATE

- 65,000 pupils in all 245 project schools are receiving a daily school lunch
- 8,443,965 school lunches served to date
- 238 kitchens and storerooms have been built in project schools, along with latrine renovation and construction
- 1,542 community cooks have been trained
- 7,800 in-service teachers have been trained in nutrition
- 3,752 new primary school teachers have graduated or are in training
- 617 after-school learning clubs have been formed, helping to increase literacy

"Mozambique has a lot of potential. This is also why the project is of such importance here. The future of each country lies in its children – the ability to nourish and educate them. Combining the available resources, education, and food, Mozambique can take full advantage of this potential."

- United States Embassy Senior Attaché Justina Torry during her visit to the Food For Knowledge Project





International Training & Capacity Building

Planet Aid provides training and capacity building assistance to development organizations around the globe. The assistance includes developing the capacity to respond to international development actors, such as the U.S. Agency for International Development (USAID). In 2014 Planet Aid's Shayan Pal helped create an innovative program in unison with our local partner, HPP-Congo, to assist orphans and vulnerable children in the Democratic Republic of the Congo.

The Democratic Republic of the Congo has over 8 million orphans and vulnerable children (children who are desperately poor and have lost one parent). Prolonged conflict, a weak economy, and the toll of HIV/AIDS have all contributed to the situation. Often in very poor health, these children are unable to obtain adequate treatment and service.

Seeking to alleviate the human suffering of this desperate situation, the U.S. Agency for International Development reached out to development agencies in 2014 to find an innovative solution to the problem. Planet Aid responded to the call with our local partner, HPP-Congo, to develop a bold community-based approach that will establish an overview of the health status of each and every household in the prescribed target area, and ensure they receive health services in conjunction with economic training and support in many cases. The strategy utilizes a cloud-based data platform to track health outcomes and other key program indicators. HPP-Congo works in local DRC communities in programs focused on health, agriculture, education, and other community needs. Their on-the-ground expertise helps to make our plan technically sound as well as realistic and feasible. We look forward to USAID accepting our proposal and starting program implementation.

Planet Aid at Home



GIVING LOCALLY TO THOSE IN NEED

During the winter months we donated coats and cold-weather gear to local shelters and charitable organizations. Our team in Massachusetts alone donated 650 coats to those in need!



RECYCLING IN OUR COMMUNITIES

Although our yellow bins are marked with the words "Clothes & Shoes," we sometimes receive other types of donations. We do our best to recycle these items by teaming up with other local organizations, like the Maryland Book Bank in Baltimore, which recycles the used books that get dropped in our bins.



AIDING REFUGEES

Planet Aid partners with the International Rescue Committee in Silver Spring, Maryland to provide clothing free of charge to newly arrived refugees.



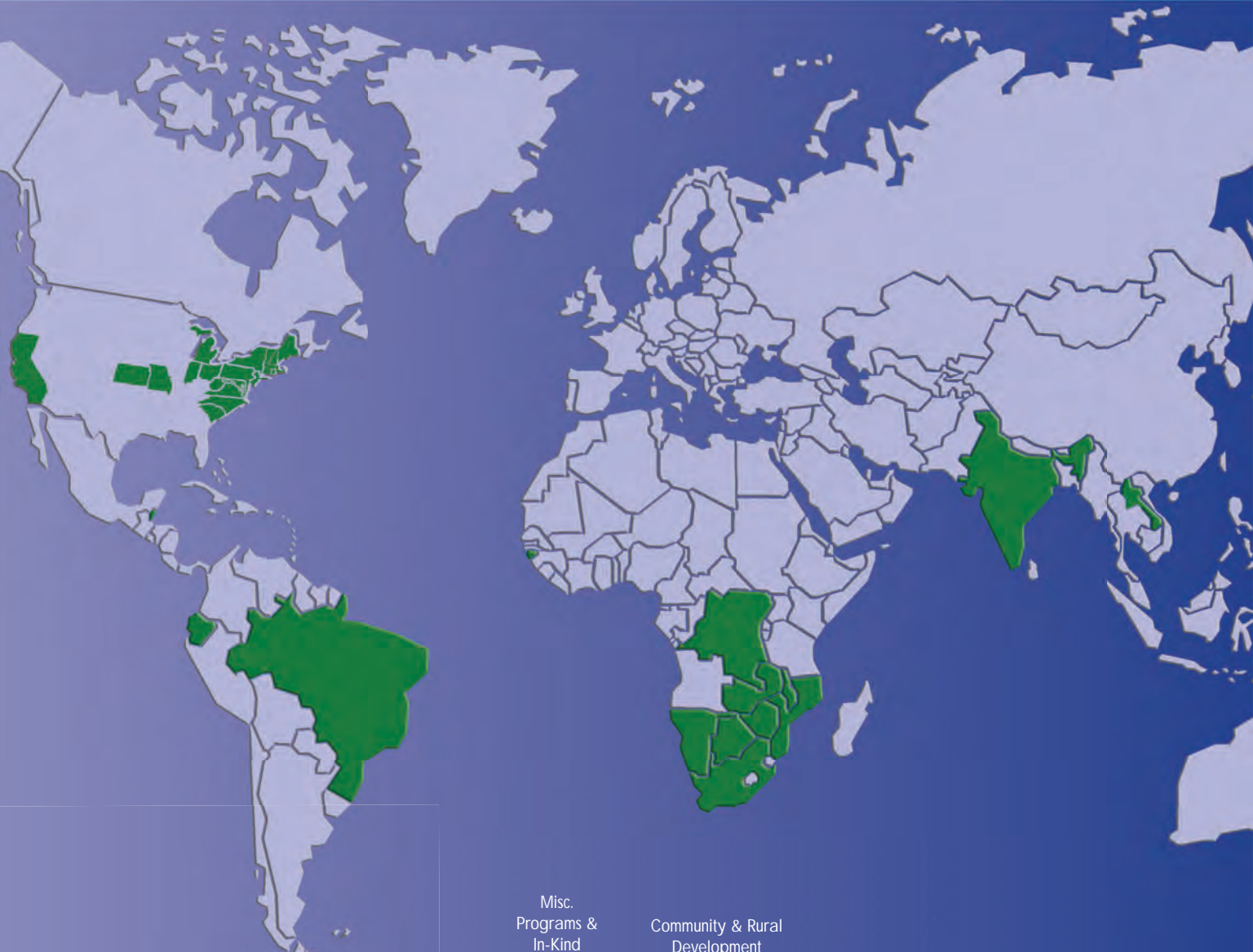
PARTNERING FOR THE ENVIRONMENT

Planet Aid and JetBlue Airways completed a project to recycle clothing from JetBlue crew members as part of the airline's nationwide sustainability initiative to reduce waste. More than five tons of used clothing from JetBlue crew members were collected throughout the JetBlue network and consolidated for pick up by Planet Aid at local airports. Sophia Mendelsohn, the Head of Sustainability at JetBlue, said, "Recycling fabric is the newest material stream JetBlue's community is keeping out of landfills. It joins our cans and bottles and composting efforts, and it is no less important than what people normally think of as recycling."

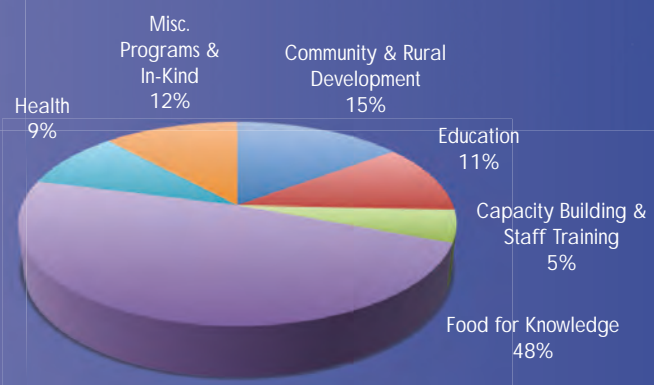
Worldwide Projects Supported by Planet Aid in 2014

Country	Projects	US\$
Belize	Child Aid	19,346
Botswana	Child Aid and Hope	419,129
Brazil	Farmers' Clubs	443,826
Congo	DNS Teacher Training College, Mbankana	200,000
	Child Aid	183,412
	Farmers' Clubs	95,000
	Capacity Building and Staff Development	70,000
Ecuador	Child Aid & Farmers' Clubs	290,104
Guinea Bissau	Vocational School Bissora	10,000
	DNS Teacher Training College	15,000
	Farmers' Clubs Oio - Rural Energy	90,594
	Ebola Prevention	6,257
India	DNS Teacher Training Colleges	70,818
	Academy for Working Children	2,484
	Girls Bridge Education	9,000
	TCE	61,250
	Microfinancing Program	38,541
	Farmers' Clubs	13,504
	Green Action Nemrana	4,983
	2015 Programs	120,000
Laos	Child Aid	86,280
Malawi	Child Aid	115,000
	TCE	120,000
	DNS Teacher Training Colleges	157,500
	Frontline Institute	7,500

Country	Projects	US\$
Mozambique	Preschools Maputo	87,432
	ADPP College Maputo	15,883
	Vocational School Nacala	31,766
	DNS Teacher Training Colleges	238,097
	One World University	260,829
	Regional Conference Center, Chimoio	270,000
	Distribution of Clothing to Vulnerable People	300,000
	Food for Knowledge	5,980,067
	2015 Programs	180,000
	South Africa	Child Aid
TCE		362,105
HOPE		119,000
Institutional Strengthening and Capacity Building of Staff		200,000
Preschools of the Future		8,000
Farmers' Clubs		43,000
2015 Programs		300,000
Zimbabwe		Child Aid
	HOPE	252,510
	Ponesai Vanhu Technical College	130,610
	Ponesai Vanhu Junior School	119,692
	Frontline Insitute	86,439
	Farmers' Clubs	39,991
	Murgwi Community Center	125,000
	2015 Programs	60,000
USA	Misc. Charities and Schools (Cash & In-kind)	493,802
Various Countries and In-kind	Computer Equipment	18,074



Distribution of Support by Sector



2014 Financial Statements

Statement of Activities 2014

OPERATING REVENUE	
Sales of donated clothing and other goods	40,974,111
Contracts - Federal	6,396,822
Other contributions	36,048
Interest and other revenue	172,298
Total operating revenue	47,579,279
OPERATING EXPENSES	
Program services	40,320,367
General and administrative	3,219,489
Fundraising and development	3,871,348
Total operating expenses	47,411,204
Non-Operating revenue	48,376
Changes in unrestricted net assets	216,451

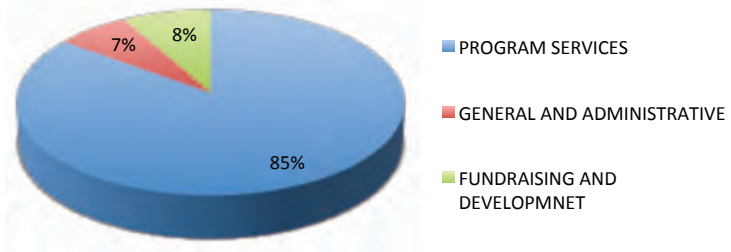
Statement of Functional Expenses 2014

PROGRAM SERVICES	
U. S. clothing collection and habitat protection	28,856,718
International training and capacity building	438,115
International aid	11,025,534
Total program services	40,320,367
GENERAL AND ADMINISTRATIVE	3,219,489
FUNDRAISING AND DEVELOPMENT	3,871,348
Total expenses	47,411,204

Statement of Financial Position 2014

ASSETS	
Cash and current assets	9,269,860
Property and equipment and other assets, net	12,070,452
Total assets	21,340,312
LIABILITIES AND NET ASSETS	
Current liabilities	5,062,442
Notes payable and capital lease obligations	5,939,707
Total liabilities	11,002,149
Unrestricted net assets	10,338,163
Total liabilities and net assets	21,340,312

Allocation of Funds



Board of Directors

Mikael Norling, *Director and Chairman*

Ester Neltrup, *Director and President*

Jytte Martinussen, *Director and Treasurer*

Clifford Reeves, *Director*

Eva Nielsen, *Director*

Alfred Besa, *Director*

Fred Olsson, *Secretary*

Planet Aid Headquarters
4730 Santa Barbara Court
Elkridge, MD 21075
Phone: (410) 796-1510

Visit our website at Planetaid.org to find the address of your local Planet Aid.

Planet Aid is a 501(c)(3) nonprofit organization that collects and recycles used clothing and shoes and supports international development projects. It is registered with the U.S. Agency for International Development (USAID) as a private voluntary organization (PVO).





Planetaid.org